

**Report by:** Head of Streets and Open Spaces

**To:** West/Central Area Committee 26 August 2010

**Wards:** Castle, Newnham and Market

**Environmental Improvements Programme**

**1. DECISIONS TO BE MADE: -**

• **Fitzroy/Burleigh Street**

*Decision: Determine whether to implement the scheme at a cost of £100,000*

• **New Environmental Improvement Schemes for 2010/2011**

**Decision:** To agree Belmore Close and Fishers Square for adoption and implementation subject to positive consultation at a total estimated cost of £11,000.

**2. BUDGET (see over)**



### **3 APPROVED SCHEMES – PROGRESS**

#### **3.1 Lammas Land pavilion**

This scheme is being led by Active Community Officers who have indicated that £35,000 would be available as an additional funding contribution from Section 106 monies. However the current estimated cost of the scheme stands at £75,000. Officers propose to continue sourcing further funding, possibly from public art S106 and return to West/Central Area Committee once the necessary funding has been secured.

#### **3.3 Tree Planting on Midsummer Common and Jesus Green**

An initial stakeholder workshop was held on 1<sup>st</sup> July, which was successful in collecting feedback regarding specific areas of both green spaces. The tables in appendix 1 of this report summarise the feedback received.

Proposals have now been put together based on the feedback from this workshop. A wider public consultation on the proposals is now taking place, which started on Wednesday 18<sup>th</sup> August and will end on Friday 10<sup>th</sup> September. The information is available on the City Council website and at the Customer Services Centre at Mandela House on Regent Street. Exhibitions will also take place throughout this period to give members of the public the opportunity to view and discuss the proposals with Officers.

The feedback from this consultation will be presented to a special meeting of West/Central Area Committee arranged for Thursday 23<sup>rd</sup> September 2010. A decision on implementation of the scheme will be made at this Committee.

#### **3.4 Riverside Conflict Reduction and Environmental Improvement Scheme**

This scheme has recently followed the City Council Tree Protocol Procedure in order to provide notification of the proposed removal of trees as part of the realignment of the carriageway on Riverside. There were no unresolved objections at the time of writing this report. Subject to any unresolved objections, construction is expected to commence in the autumn.

## 4 EXISTING SCHEMES REQUIRING DECISIONS

### 4.1 Fitzroy/Burleigh Street Refurbishment

The detailed design of this scheme has been completed by Cambridgeshire County Council in conjunction with the City Council and is shown on the plan attached to appendix 2 of this report.

The scheme consists of:

- Removal of five telephone boxes.
- Supply and installation of two surrounds to the base of two trees in Fitzroy Street where roots are lifting the existing paving.
- Planting of three new trees.
- Renewal of street furniture.
- Installation of street directory signs.
- Renewal of the existing 1980's street lighting at the lower end of Fitzroy Street with modern lighting to match lighting already replaced in Burleigh Street.

The scheme varies slightly from that published previously in as much as removal of some existing phone boxes as proposed has not proved possible. Agreement to remove five out of a total of twelve has been achieved and negotiations with providers are still ongoing and may prove more successful in the near future. However the phone boxes in question are re-instated on the plan for the interim and will be removed subject to any further agreements with the phone box providers. Particular efforts will be made to secure the removal of two existing boxes outside property number 60 on Burleigh Street.

Construction of the scheme would take place from late September to the end of October. The precise dates will be notified to the local residents and traders nearer the time.

The estimated total cost of the scheme is £184,290 and it is proposed that this is funded from a contribution from the West/Central Area EIP Fund of £100,000, from S106 contributions of £72,290 and the Environmental Safety Fund of £12,000.

***Recommendation:*** For the Committee to determine whether the scheme should be implemented with a contribution of £100,000 from the West/Central Area Committee EIP fund.

***Decision:*** Determine whether to implement the scheme at a cost of £100,000.

## 5 New Environmental Improvement Schemes for 2010/2011

### 5.1 Belmore Close

New street name plates for Belmore Close incorporating 'no through road' symbol. Cycle barriers to improve safety along the alleyway between Belmore Close and Badminton Close. Both proposals are illustrated on the plan in Appendix 3 of this report.

The estimated cost of this scheme is £3000.

### 5.2 Fishers Square

Introduction of litter bins and improvements to the existing tree grills. The proposal to provide cycle parking in this area is not recommended due to the lack of available space necessary for it to function appropriately. To minimise the issue of cycles being chained to the railings, it is proposed to erect signs attached to the railings notifying cyclists that their cycle will be removed if left against the railings. The estimated cost of this scheme is £8000.

***Recommendation:*** West/Central Area Committee to determine whether Fishers Square and Belmore Close should be adopted and implemented subject to positive consultation at a total estimated cost of £15,000.

***Decision:*** To agree Belmore Close and Fishers Square for adoption and implementation subject to positive consultation at a total estimated cost of £11,000.

## 5 BACKGROUND PAPERS

Appendix 1 - Summary of Workshop Feedback for Midsummer Common & Jesus Green Tree Planting Scheme.

Appendix 2 - Fitzroy/Burleigh St Proposed Layout Plan

Appendix 3 - Belmore Close Proposals

Appendix 4 - EIP Eligibility Criteria

## 6 IMPLICATIONS

- a) **Equal Opportunities Implications:** These are taken into account on individual schemes.
- b) **Environmental Implications:** All of the projects seek to bring about an improvement in the local environment.
- c) **Community Safety:** This has been included as one of the assessment criteria agreed by Committee and is considered on each project.

## 7 INSPECTION OF PAPERS

To inspect or query the background paperwork or report, please contact,

Andrew Preston

Environmental Projects Manager

Telephone: 01223 457271

Email: [andrew.preston@cambridge.gov.uk](mailto:andrew.preston@cambridge.gov.uk)

## **APPENDIX ONE**

---

Summary of Workshop Feedback for Midsummer  
Common & Jesus Green Tree Planting Scheme.

Tree management and planting on Jesus Green and Midsummer Common				
Workshop 1 July 2010 : Event Record				
<b>JESUS GREEN</b>				
Issues identified				
	<b>Group 1 comments</b>	<b>Group 2 comments</b>	<b>Group 3 comments</b>	<b>Group 4 comments</b>
<b>Victoria Road Horse Chestnut Avenue</b>	Co-ordinate with Midsummer common. Plant Oak + Elm in gaps between existing Chestnuts.	Follow same approach as Midsummer Common side of road.	Remove all existing chestnuts over next 5-15yrs to create gaps and replant to the outside of extg. Avenue with single large specie, e.g. London Plane, Oak.	
<b>London Plane avenue (Victoria Rd to Jesus Lock)</b>	Replace London Plane in gaps as they fail.	Replace London Plane in gaps as they fail. Solve waterlogging problem.		
<b>Path from Victoria Road to Lower Park St</b>	Retain and replace cherries (not major structural planting). Plant more long lived trees in scattered planting.			
<b>Bird cherry avenue (Jesus Lock to Park Parde)</b>	Retain and replace bird cherries as they fail.	Allow to fail and replace in one activity.		
<b>Riverside path trees</b>	Retain views of river. Replace trees as extg. Fail. Replace lost trees with riveside specie.	Gap up and strengthen boundary.	Informal planting with some native species. Retain views across river.	
<b>Jesus Green pool boundary</b>	Remove Leylandii + replace with appropriate specie. Continue informal planting (mixed).		Remove Leylandii + replace with evergreen hedge and manage Limes.	
<b>Existing open spaces</b>	Retain as open spaces without tree planting.	Retain as open spaces without tree planting. Perimeter trees planted in informal style to follow Midsummer Common.		
<b>Area around pavilion and lock keepers house</b>	Area in need of enhancement (poor quality Birch).			
<b>End of footpath adjacent to tennis courts.</b>	Remove Leylandii.			
<b>Path from Jesus Lock to Lower Park St</b>		Plant new avenue.		

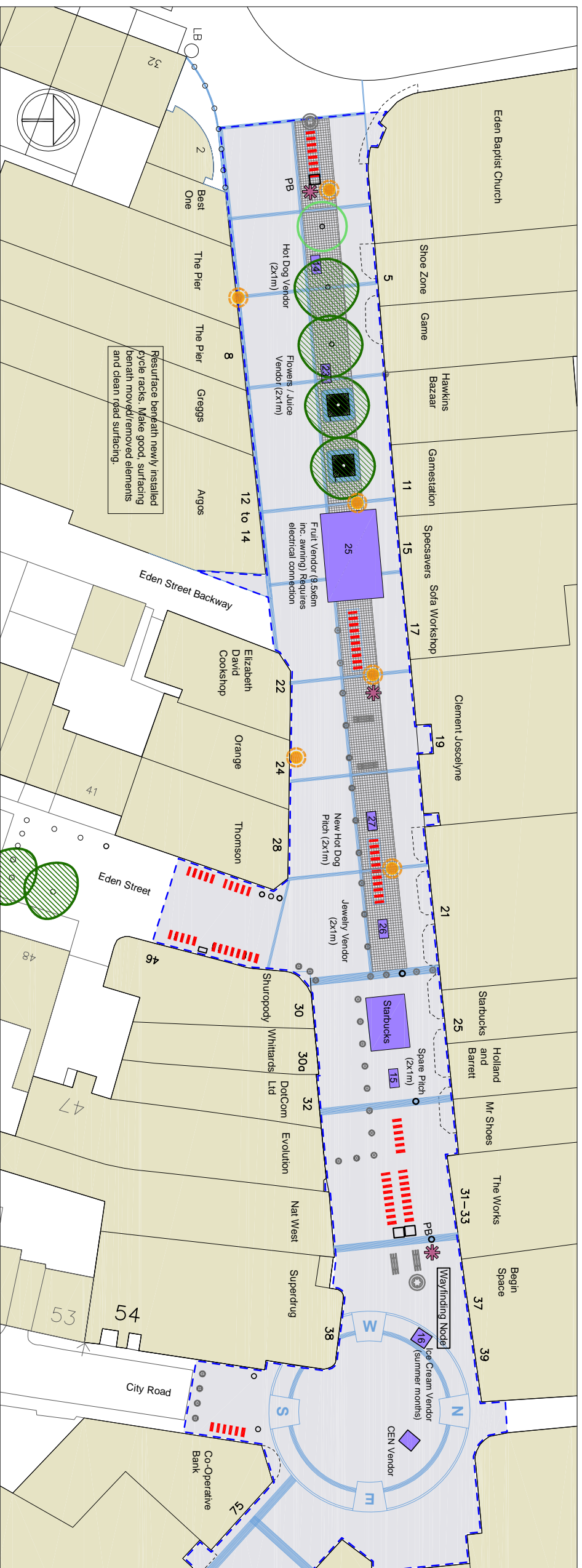


Tree management and planting on Jesus Green and Midsummer Common				
Workshop 1 July 2010 : Event Record				
<b>MIDSUMMER COMMON</b>				
Issues identified				
	Group 1 comments	Group 2 comments	Group 3 comments	Group 4 comments
<b>Victoria Road Horse Chestnut Avenue*</b>	Plant succession trees in gaps as far forward to road as poss. Elm/Oak?	Undecided on approach to planting location. Species choice - Carpinus, Tilia cordata, Fraxinus	Remove all existing chestnuts over next 5-15yrs to create gaps and replant to the outside of extg. Avenue with single large specie, e.g. London Plane, Oak.	Screen traffic movement. Retain avenue. Could fell all and start again.
<b>Central open spaces</b>	Keep existing areas clear of any tree planting with mixed species perimeter planting			Retain open spaces and focus on boundaries. Do not jeopardise meadow areas.
<b>Area around footpaths to the north of Parsonage St and Auckland Rd</b>	Plant single, long lived trees informally, particularly at junctions of paths, e.g. Oak + Elm.		Plant clusters of trees to create soft edge.	
<b>Riverside path</b>	Replace recently felled Beech with large species tree	Strengthen river boundary possibly with Willow.	Consider green corridor and not formal line of trees with views kept to opposite bank. Suitable native species such as Willow. Arrange in clusters of trees with understorey and seating. Play with light and shadow. Plant between boat houses on opposite bank.	Informal planting and could be done in phases with Willow, London Plane, Black Poplar.
<b>Butt Green (Maids Causeway)</b>	Screen toilet block	Species mix too varied.		
<b>Elizabeth Way bridge</b>	Plant specimen trees from orchard towards Elizabeth Way bridge	Screen views.		
<b>Brunswick development</b>		Plant to screen development from Common.		Replant avenue in front of Brunswick development and possibly in front of allotments
<b>Southern boundary Area around Fort St. George</b>		Plant on contour line. Consider bold line or groups of large species trees but protect views from houses.		Possible conflict between views for residents and users of common. Preserve views to river.
<b>Specimen Trees</b>		Plant groups of native specie trees.	Consider new planting.	
<b>Walnut Tree Avenue</b>			Plant large, broad canopied trees such as Oak as shown on drawing. Plant at path junctions and bridge points as waymarkers.	Plant Walnut trees.

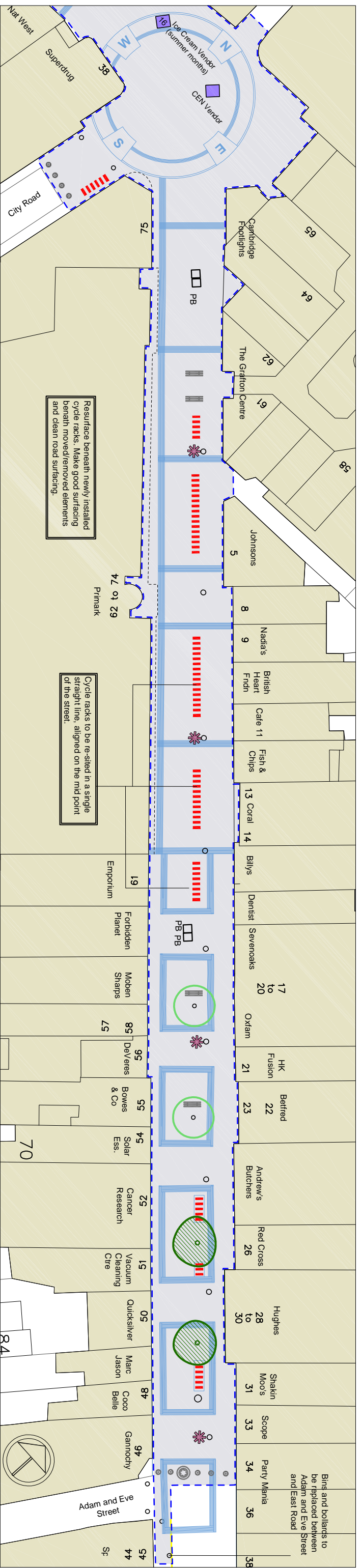
## **APPENDIX TWO**

---

Fitzroy/Burleigh St Proposed Layout Plan



**Fitzroy Street**



**Burreleigh Street**

Resurface beneath newly installed cycle racks. Make good surfacing beneath moved/removed elements and clean road surfacing.

Cycle racks to be re-sited in a single straight line, aligned on the mid point of the street.

Resurface beneath newly installed cycle racks. Make good, surfacing beneath moved/removed elements and clean road surfacing.

Birds and bollards to be replaced between Adam and Eve Street and East Road

**CAMBRIDGE CITY COUNCIL**

**ENVIRONMENT AND PLANNING DEPARTMENT**  
Environmental Projects

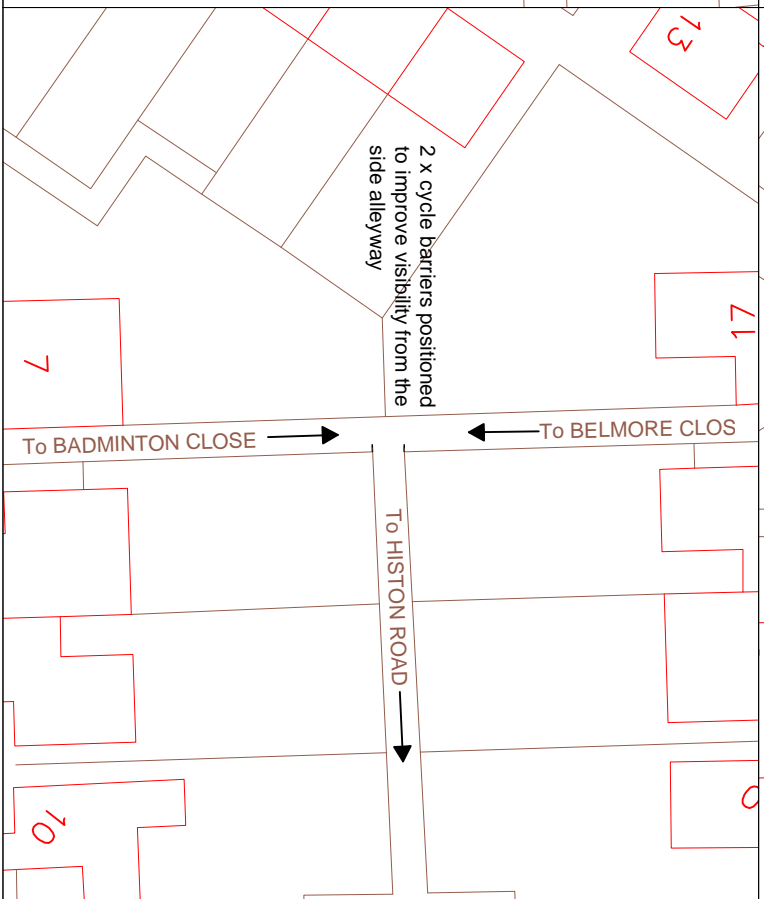
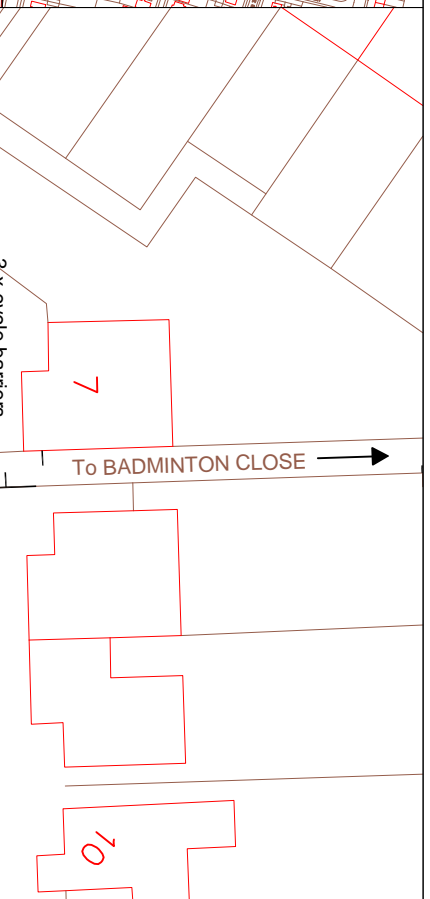
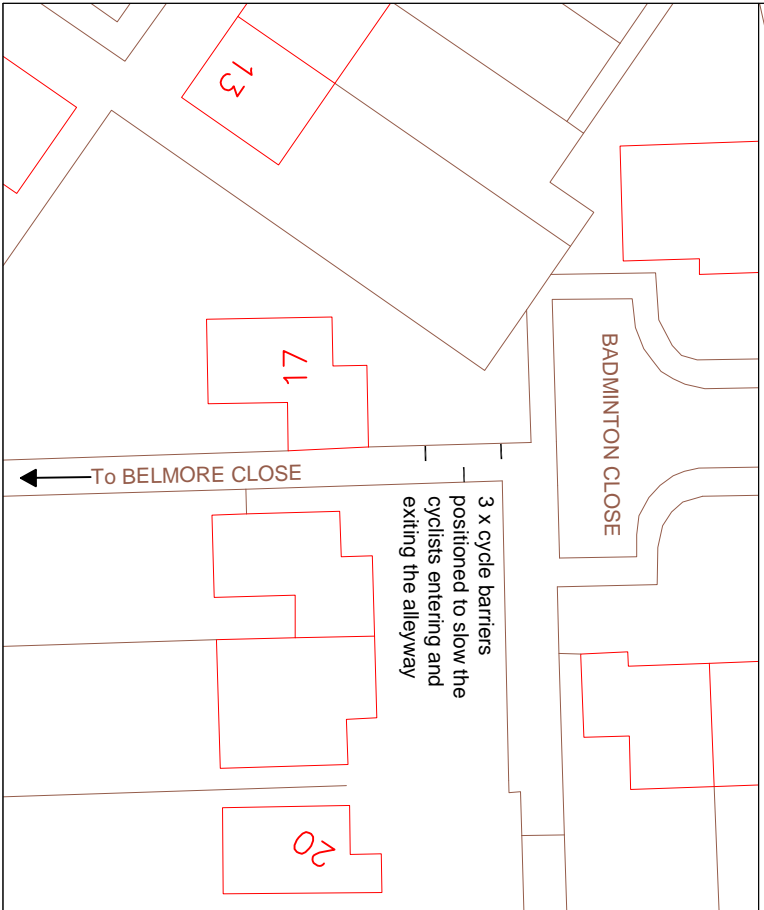
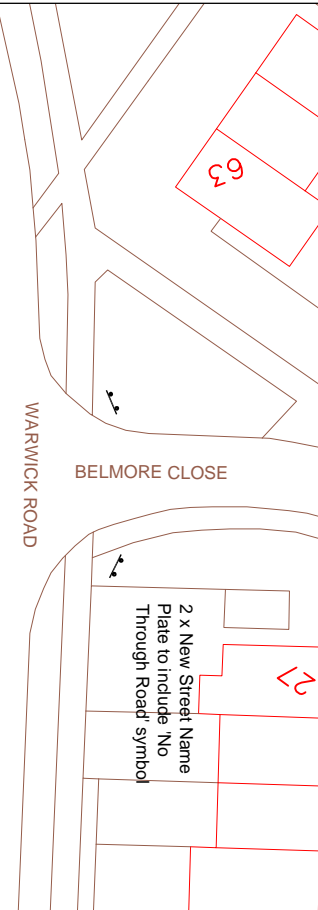
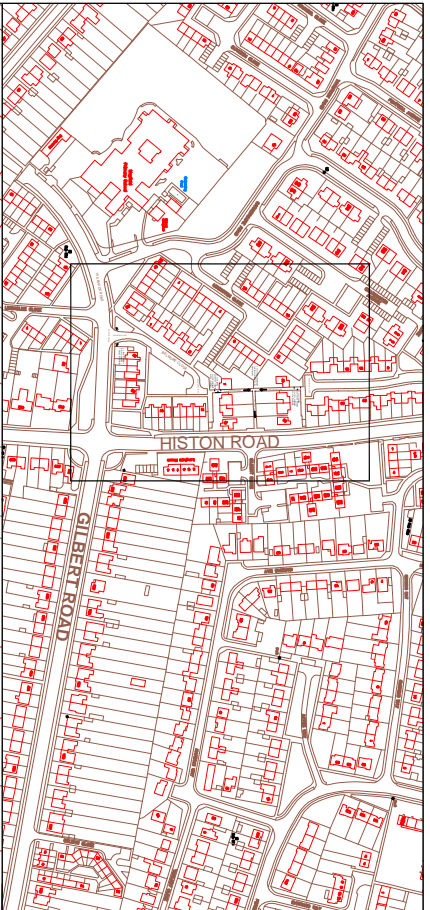
Simon Payne, Director of Environment and Planning  
CAMBRIDGE CITY COUNCIL  
The Guildhall, Cambridge CB2 3QJ  
Tel: 01223 - 457200 or 457201

Scale	1:250@A1	By:	AJ	Date	Jan 10
Project:	<b>Fitzroy / Burreleigh Street</b>				
Drawing:	Refurbishment Proposals				
Job Ref / DWG No	ETP 020-151-001	Revision	C		

## **APPENDIX THREE**

---

Belmore Close Proposals



**DO NOT SCALE**  
 Figured dimensions must be taken in preference to scaled dimensions. Contractors, sub-contractors and suppliers must verify all dimensions on site before commencing any work or installation. All dimensions are subject to the approval of the contract administrators / landscape architect's attention.

Revision	Date	By	Details

Job Ref./DWG.No  
 EIP 020-SK-004

Scale @A4  
 As shown

By:  
 AH

Date  
 Aug 10

**ENVIRONMENT AND PLANNING DEPARTMENT**  
**URBAN DESIGN TEAM**  
 Simon Payne, Director of Environment and Planning  
 CAMBRIDGE CITY COUNCIL  
 The Guildhall, Cambridge CB2 3QU  
 Tel: 01223 - 457200 or 457201

**Project:** Belmore Close Improvements

**Drawing:** Layout

This drawing is the property of the City of Cambridge and is not to be reproduced or used in any way without the prior written consent of the City of Cambridge. It is provided for your information only and is not to be used for any other purpose. Cambridge City Council, 2010.

## **APPENDIX FOUR**

---

EIP Eligibility Criteria

## **ELIGIBILITY CRITERIA - as agreed by Executive Councillor (Environment) on 18 March 2003 with amendments agreed 22 March 2005**

The essential criteria for consideration of funding of Environmental Improvement works are:

- Schemes should have a direct, lasting and noticeable improvement to the appearance of a street or area.
- Schemes should be publicly visible and accessible.
- Schemes must have the owners consent if on private land – unless there are exceptional circumstances by which Area Committee may wish to act unilaterally and with full knowledge and responsibility for the implication of such action.
- Schemes must account for future maintenance costs.

Desirable criteria – potential schemes should be able to demonstrate some level of:

- Active involvement of local people.
- Benefit for a large number of people.
- 'Partnership' funding.
- Potential for inclusion of employment training opportunities.
- Ease and simplicity of implementation.
- Potential for meeting key policy objectives (e.g. improving community safety or contributing to equal opportunities).

Categories of scheme ineligible for funding:

- Where a readily available alternative source of funding is available.
- Revenue projects.
- Schemes that have already received Council funding (unless it can be clearly demonstrated that this would not be 'top up' funding).
- Works that the City or County Council are under an immediate obligation to carry out (e.g. repair of dangerous footways)
- Play areas (as there are other more appropriate sources of funding including S106 monies)

The following categories of work were agreed as being eligible for funding by the Area Committees:

- Works in areas of predominately council owned housing
- Works to construct lay-bys where a comprehensive scheme can be carried out which not only relieves parking problems but achieves environmental improvements.